

M420A – Slab Roller

Operation Manual and Parts List

ENCLOSED - 5 Cartons

Carton #1 - Table Frame
(4-legs, 2-side rails with latches, 2-end rails, 2-mounting brackets and hardware)

Carton #2 - Slab Rolling Unit and Canvas

Carton #3 - Tabletop

Carton #4 - Wagon Wheel and Crank Handle

Carton #5* - 2 -Leveling Wheels, 2 - Handles,
2 - Screws, washers and steel wedges

* Carton #5 Enclosed in carton #2

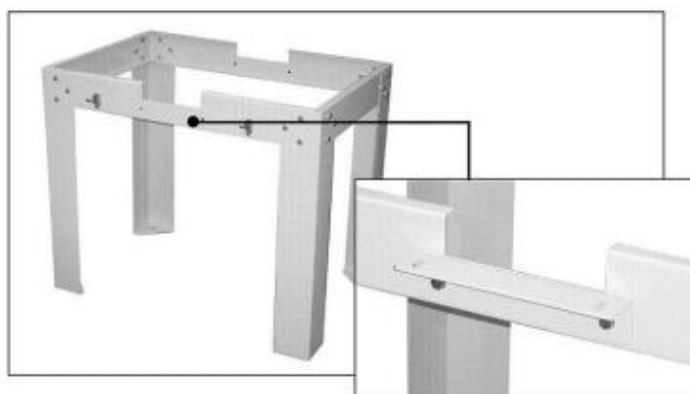


IMPORTANT: Before using read carefully the contents of this Operation Manual in order to maintain the equipment in good working condition at all times and to avoid possible danger because of negligence.

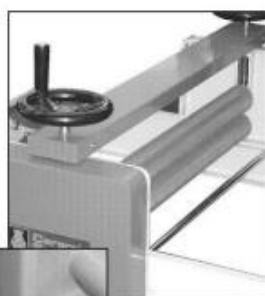
Step 1 - Open Carton #1

Assemble the 4 Legs to Side and End Rails with M10 x 20 Cap Screws and M10 Hex Nuts.

Mount Slab Roller Bracket onto Side Rails by using the M10 x 20 Cap Screw and M10 Wing Nut.

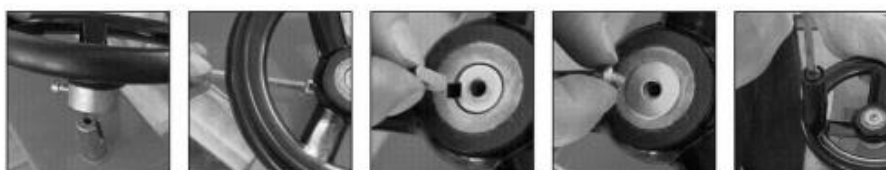
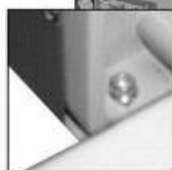


Step 2 - Open Carton #2 and #5



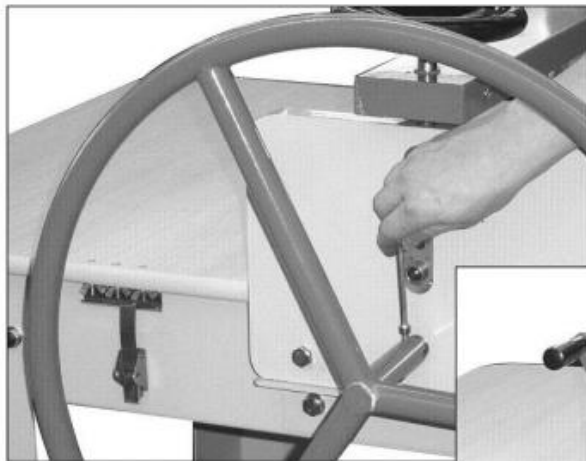
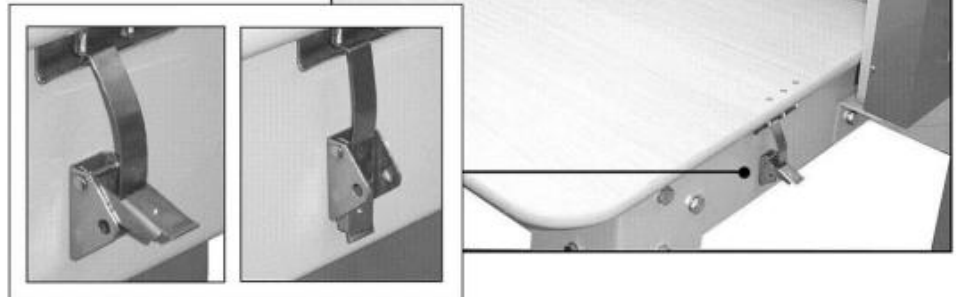
Place the Slab Rolling Unit onto the frame and screw on with the M6 x 20 Socket Cap Screw and Wing Nut.

Place Extension Wheel onto the Leveling Arm of the Roller Unit and tighten with Wrench. Place Steel Wedge into Square Insert, Cover with Washer and tighten with Screw. Screw Handle to top of Wheel.



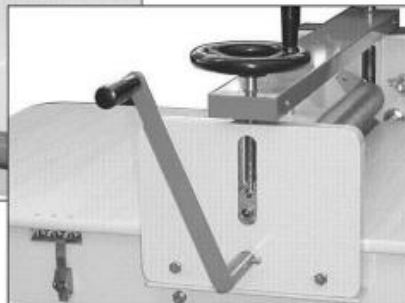
Step 3 - Open Carton #3

Attach the Tabletop to the Table frame using the M5 x 30 Flathead Socketcap Screws and the M5 Wing Nuts. Be sure to Clip the Latches to the Frame Lips.



Step 4 - Open Carton #4

Using either the Wagon Wheel or the optional Crank Handle (your choice), loosen the Set Screw on the Wagon Wheel (or Crank Handle) and put on the Shaft. Then Tighten the Set Screw.



Shown with optional Crank Handle

OPERATING INSTRUCTIONS:

- 1) Raise the Upper Roller's Height by using the Leveling Handle on the unit
- 2) Take out the Canvas from Carton #2 and lay it out on one side of the tabletop
- 3) Place a piece of clay on the canvas and press the clay with your palm to reduce some of the thickness
- 4) Cover the clay with the rest of the canvas and push the canvas edge into the rollers. Use the handle to adjust the thickness and then turn the Wagon Wheel (or Crank Handle) to pass the clay through the Slab Rollers